



PERGOLA.at

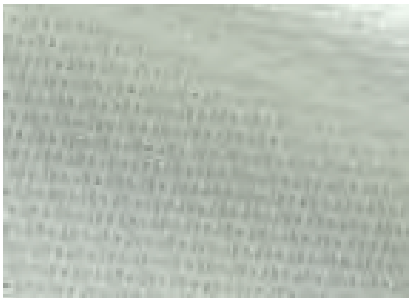
by GÜNTHER TORE 

GEWEBE/  
STOFFE

ZUBEHÖR  
PERGOLA:  
REFLEKSOL

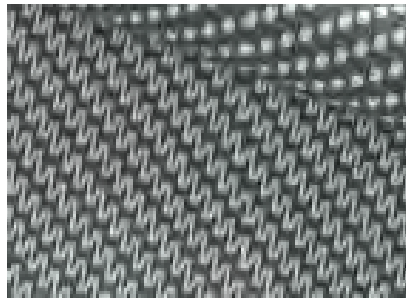
# SERGE 600

WHITE - WHITE



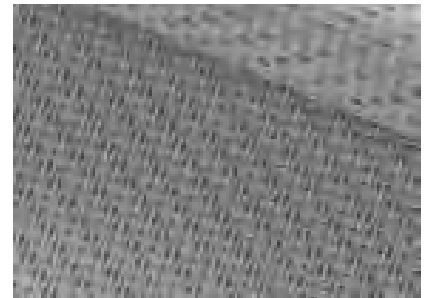
60002002

GREY - WHITE



60001002

PEARL - GREY



60007007

GREY - GREY



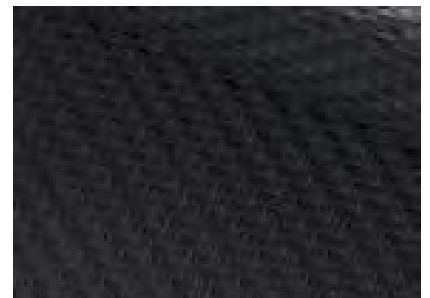
60001001

GREY - CHARCOAL



60001010

CHARCOAL - CHARCOAL



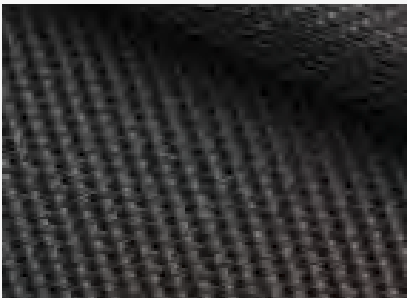
60010010

	composition	weight [g/m <sup>2</sup> ]	thickness [mm]	light fastness blue scale level EN ISO 105 B02 EN ISO 105 B04	openness factor [%]	EN 14501				application
						TS [%]	RS [%]	AS [%]	TV [%]	
White - White	42% glasfibre + 58% pvc	525	0.74	>7	5	21/21	65.9/66.3	13.2/12.7	21.2/21.2	interior / exterior
Grey - White						6.7/6.7	37.2/26.9	56.2/66.4	6.6/6.6	
Pearl - Grey						10.1/10.1	38.3/39.4	51.7/50.5	8.4/8.4	
Grey - Grey						3.5/3.5	15.1/15.1	81.3/81.4	3.6/3.6	
Grey - Charcoal						3.6/3.6	9.9/12.6	86.5/83.8	3.6/3.6	
Charcoal - Charcoal						3.6/3.6	5.0/4.8	91.4/91.6	3.6/3.6	
Tearing resistance (daN) UNE EN ISO 4674-1 method 2 - Warp: 8.5, Weft: 7.5 Breaking strength (daN/5cm) UNE EN ISO 1421 - Warp: 260, Weft: 225 Flame retardant - Certificate on request										



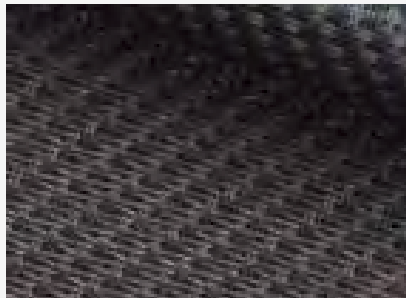
# SERGE 600

## PURE BLACK



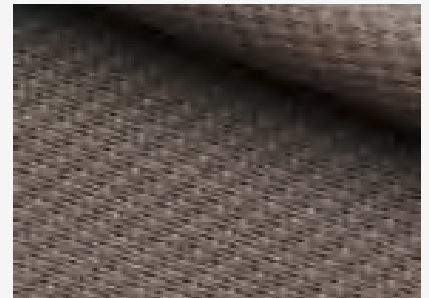
60030030

## CHARCOAL - BRONZE



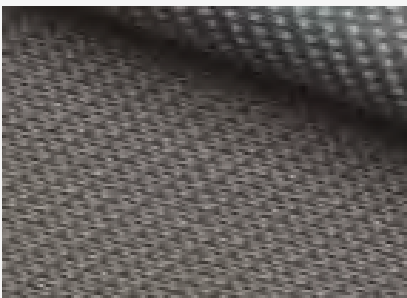
60010011

## SANDSTONE



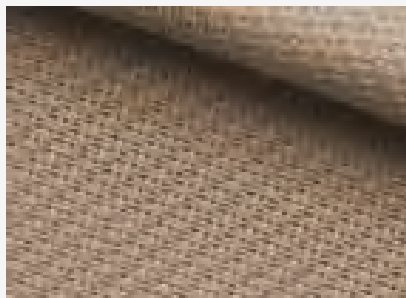
60033033

## GREY - SAND



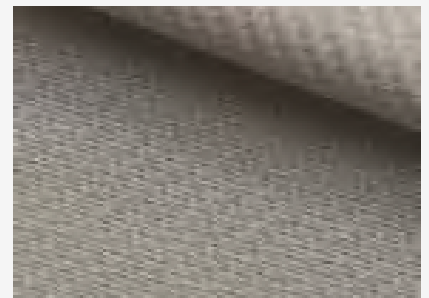
60001003

## LINEN - LINEN



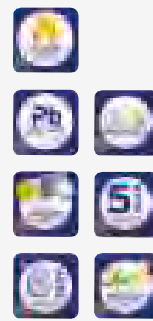
60008008

## LINEN - WITE



60008002

	composition	weight [g/m <sup>2</sup> ]	thickness [mm]	light fastness blue scale level EN ISO 105 B02 EN ISO 105 B04	openness factor [%]	EN 14501				application
						TS [%]	RS [%]	AS [%]	TV [%]	
Pure Black	42% glasfibre + 58% pvc	525	0.74	>7	5	5.9	3.7	90.4	5.9	interior / exterior
Charcoal - Bronze						6.1	6.5/6.0	87.4/87.9	6.1	
Sandstone						7.1	20.4/20.5	72.4/72.5	6.8	
Grey - Sand						4.7	26.5/21.5	68.8/73.8	4.5	
Linen - Linen						14.9	52.5/52.7	32.5/32.4	12.9	
Linen - Wite						15.5	58.2/56.4	26.4/28.1	13.7	
Tearing resistance (daN) UNE EN ISO 4674-1 method 2 - Warp: 8.5, Weft: 7.5 Breaking strength (daN/5cm) UNE EN ISO 1421 - Warp: 260, Weft: 225 Flame retardant - Certificate on request										



# SERGE 600

WHITE - WHITE



6BO002002

WHITE - PERL GREY



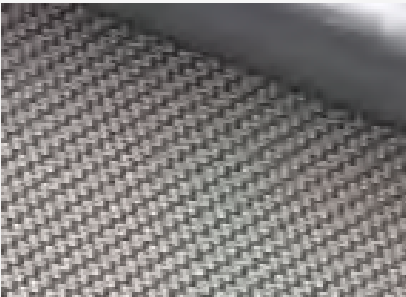
6BO002007

PEARL GREY - PEARL GREY



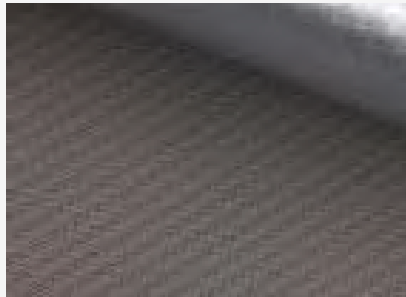
6BO007007

WHITE - GREY



6BO001002

OYSTER SHELL



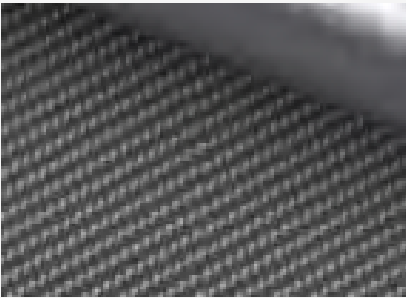
6BO033001

GREY - GREY



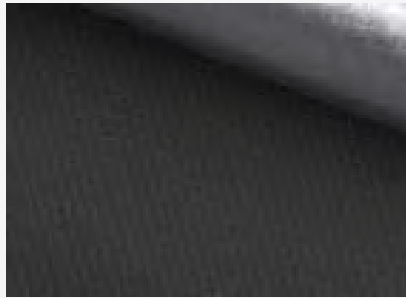
6BO001001

GREY - CHARCOAL



6BO001010

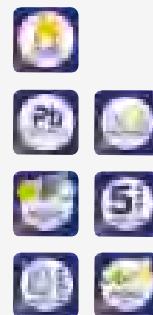
CHARCOAL - CHARCOAL



6BO010010

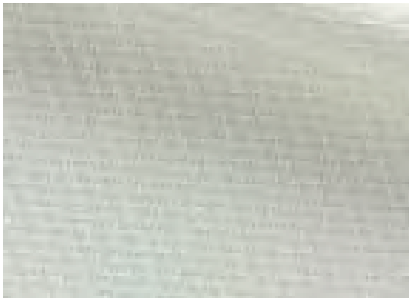
	composition	weight [g/m <sup>2</sup> ]	thickness [mm]	light fastness blue scale level EN ISO 105 B04	openness factor [%]	EN 14501				application
						TS [%]	RS [%]	AS [%]	TV [%]	
White - White	33% GLASFIBRE 47% PVC 20% PVC LAMINATE	678	0.73	>7	0	0	68.8/33.7	31.2/66.3	0	interior / exterior
White - Perl Grey						0	47.8/33.2	52.2/66.8	0	
Pearl Grey - Pearl Grey						0	35.5/34	64.5/66	0	
White - Grey						0	40.3/33.7	59.7/66.3	0	
Oyster Shell						0	18.2/33.4	81.8/66.6	0	
Grey - Grey						0	17.2/33.1	82.8/66.9	0	
Grey - Charcoal						0	11/33.7	89/66.3	0	
Charcoal - Charcoal						0	6.2/33.4	93.8/66.6	0	
Tearing resistance (daN) UNE EN ISO 4674-1 method 2 - Warp: 8.5, Weft: 9 Breaking strength (daN/5cm) UNE EN ISO 1421 - Warp: 224.2, Weft: 176.6 Flame retardant - Certificate on request										

**SERGE 600 BO LUNAR**



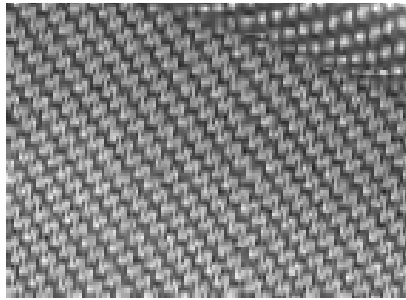
# SERGE 1%

WHITE - WHITE



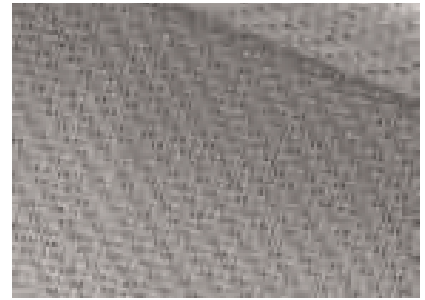
61002002

GREY - WHITE



61001002

PEARL - GREY



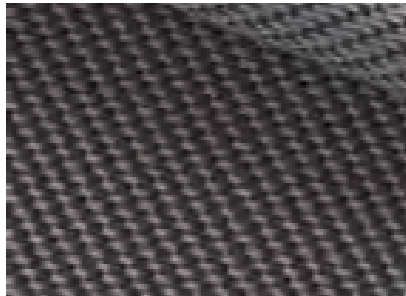
61007007

GREY - GREY



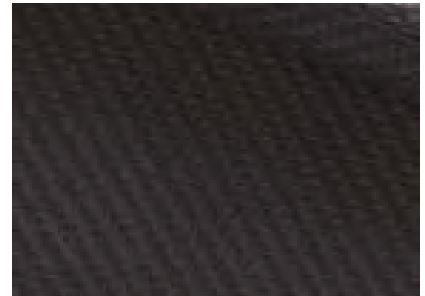
61001001

GREY - CHARCOAL



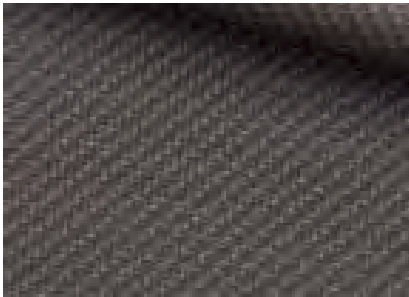
61001010

CHARCOAL - CHARCOAL



61010010

BRONZE - BRONZE



61011011

LINEN - LINEN



61008008

	composition	weight [g/m <sup>2</sup> ]	thickness [mm]	light fastness blue scale level EN ISO 105 B02 EN ISO 105 B04	openness factor [%]	EN 14501				application
						TS [%]	RS [%]	AS [%]	TV [%]	
White - White	42% glasfibre + 58% pvc	638	0.78	>7	1	12.8	71.3	15.9	12.9	interior / exterior
Grey - White						2.2	44.8/31.2	53/66.6	2	
Pearl - Grey						2.8	36.9	60.3	2.1	
Grey - Grey						2.4	17.4	80.2	2.2	
Grey - Charcoal						1.2	10.5/14	88.3/84.8	1.2	
Charcoal - Charcoal						1.1	5.9	93	1.1	
Bronze - Bronze						1.4	8.6	90	1.3	
Linen - Linen						5.9	54.2	39.9	3.7	
Tearing resistance (daN) UNE EN ISO 4674-1 method 2 - Warp: 5.9, Weft: 6.2 Breaking strength (daN/5cm) UNE EN ISO 1421 - Warp: 321, Weft: 277 Flame retardant - Certificate on request										

