



PERGOLA.at

by GÜNTHER TORE 

**REFLEKSOL  
MARKISE**

**STOFF-  
SORTIMENT**

# REFLEKSOL SERGE 1%

\_ GLASFASER & PVC BESCHICHTUNG  
\_ HOHE STABILITÄT  
\_ HOHE BRANDSICHERHEIT  
\_ HOHER HITZESCHUTZ



White White 02002

**Serge 1%**



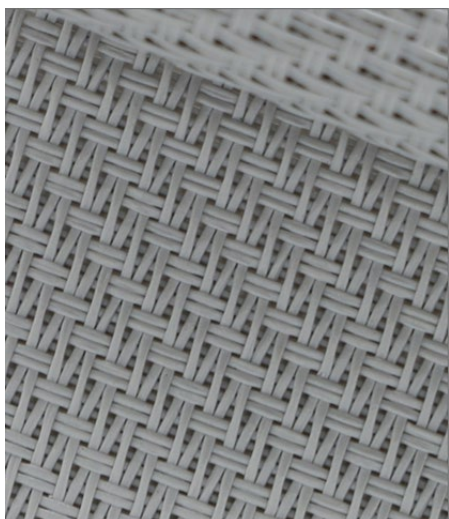
Linen Linen

**Serge 1%**



Grey White 01002

**Serge 1%**



Pearl Grey 07007

**Serge 1%**



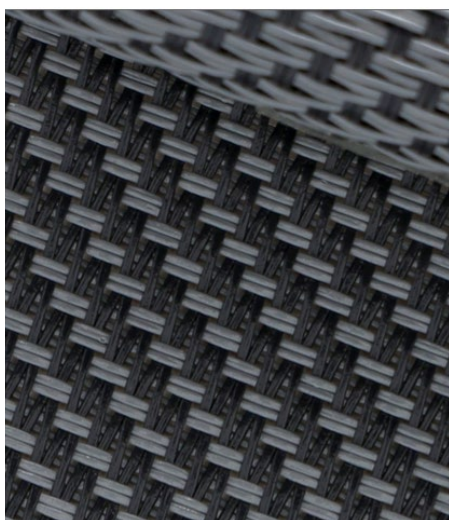
Bronze Bronze

**Serge 1%**



Grey Grey 01001

**Serge 1%**



Grey Charcoal 01010

**Serge 1%**



Charcoal Charcoal 10010

**Serge 1%**

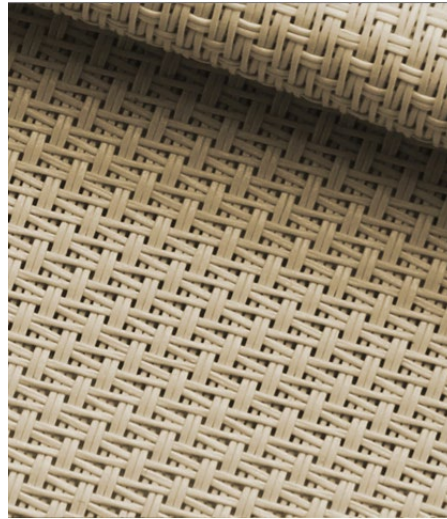
# REFLEKSOL SERGE 600

\_GLASFASER & PVC BESCHICHTUNG  
\_HOHE STABILITÄT  
\_HOHE BRANDSICHERHEIT  
\_HOHER HITZESCHUTZ



Linen White

**Serge 600**



Linen Linen

**Serge 600**



Sandstone

**Serge 600**



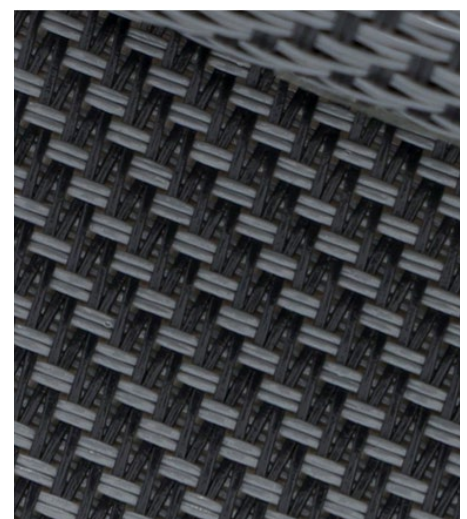
Grey Sand

**Serge 600**



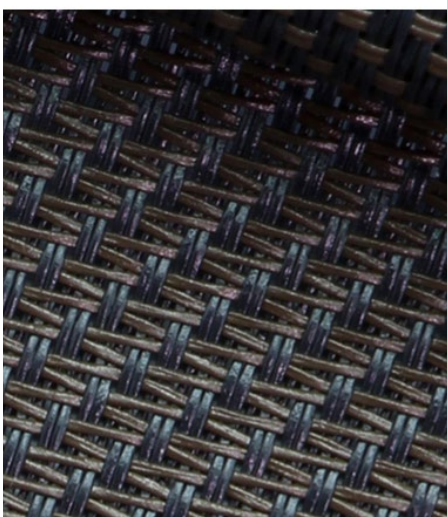
GreyGrey 01001

**Serge 600**



Grey Charcoal 01010

**Serge 600**



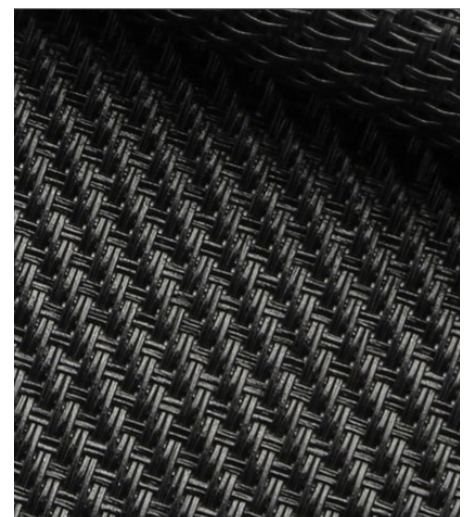
Charcoal Bronze

**Serge 600**



Charcoal Charcoal 10010

**Serge 600**



Pure Black

**Serge 600**

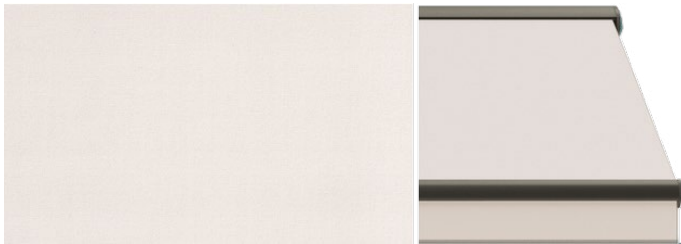
# MARKISE WATERPROOF



\_ACRYL 100%, SPINNDÜSENGEFÄRBT  
\_HOHER UV SCHUTZ

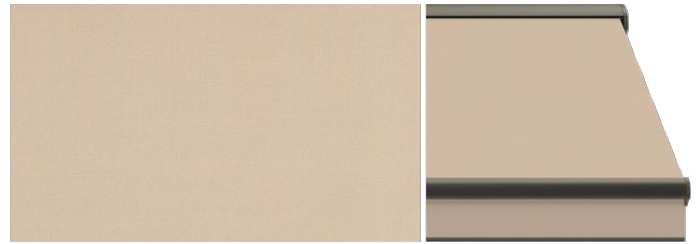
\_HOHE FARBECHTHEIT  
\_WASSERSÄULE 1000mm

## BLANCO WATERPROOF



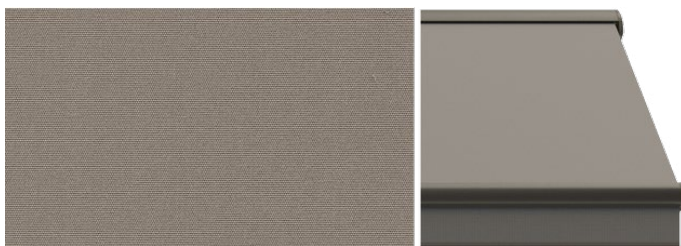
8268 | UV:97% | Gtot: 18%

## MARFIL WATERPROOF



8272 | UV:97% | Gtot: 16%

## GRIS WATERPROOF



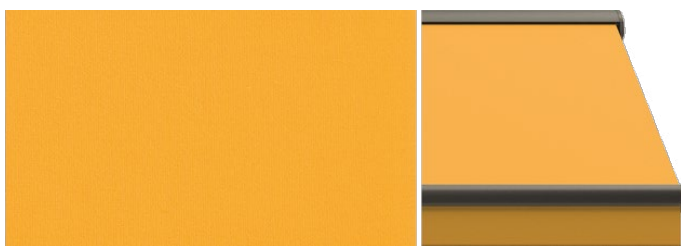
8271 | UV:99% | Gtot: 7%

## COCO WATERPROOF



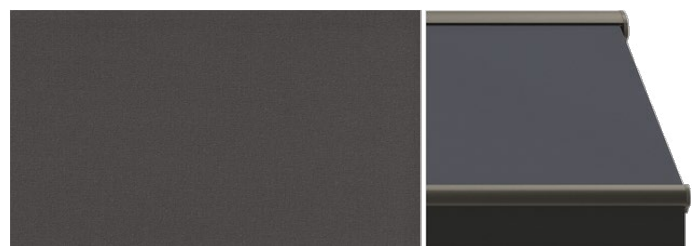
2047 | UV:99% | Gtot: 9%

## AMARILLO WATERPROOF



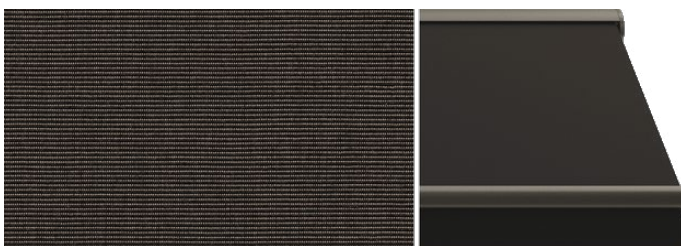
8265 | UV:99% | Gtot: 15%

## ANTRACITA WATERPROOF



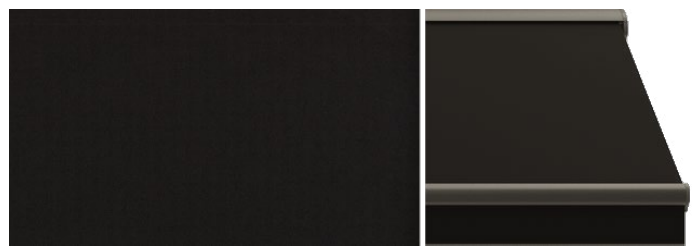
2796 | UV:99% | Gtot: 6%

## TWEED BLACK WATERPROOF



2085 | UV:99% | Gtot: 6%

## BLACK WATERPROOF



8275 | UV:99% | Gtot: 5%

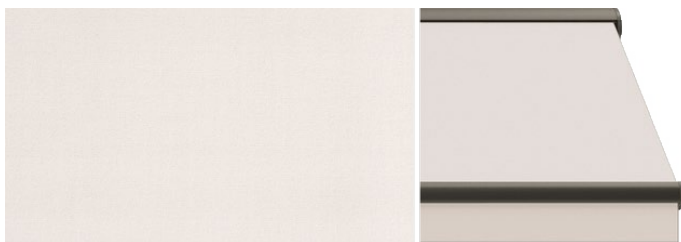
Alle Waterproof Farben auch in *Solid* Ausführung erhältlich

# MARKISE SOLID

\_ACRYL 100%, SPINNDÜSENGEFÄRBT  
\_TEFLON® ODER SCOTCHGARD™  
IMPRÄGNIERUNG

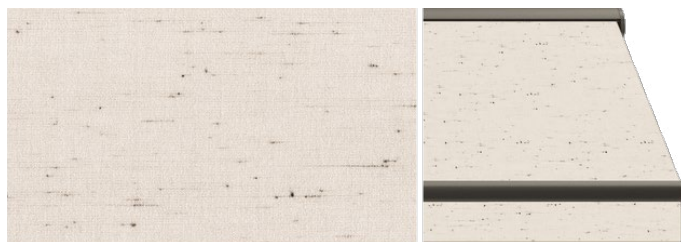
\_HOHER UV SCHUTZ  
\_HOHE FARBECHTTHEIT  
\_WASSERSÄULE 330mm

BLANCO



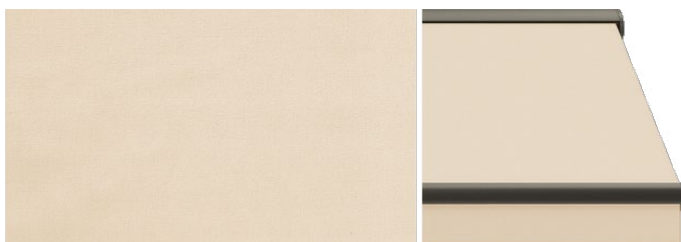
2042 | UV:97% | Gtot: 18%

BERNA



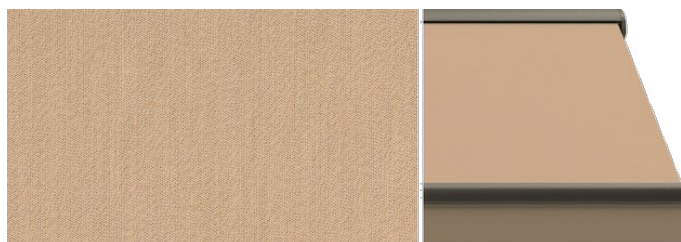
2041 | UV:97% | Gtot: 16%

NATURAL



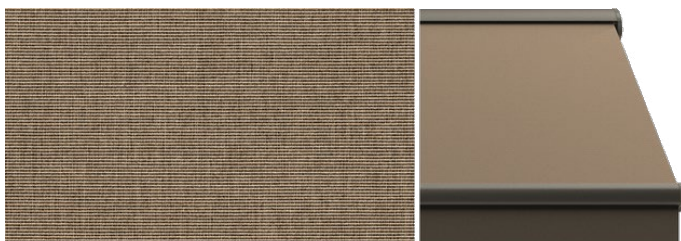
2929 | UV:97% | Gtot: 18%

SIROCO



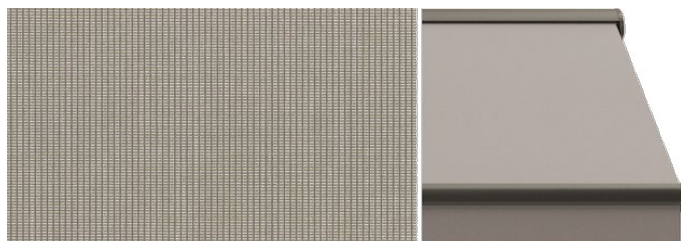
2226 | UV:98% | Gtot: 12%

TWEED BROWN



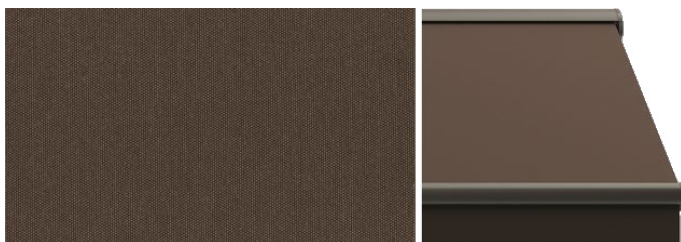
0403 | UV:99% | Gtot: 6.82%

MARBLE



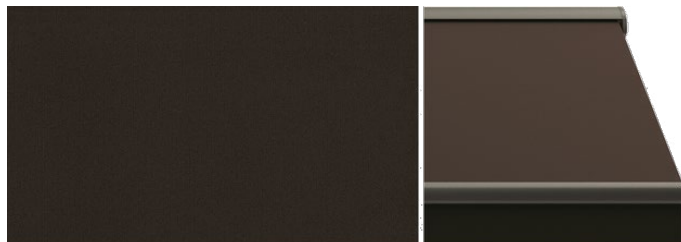
0923 | UV:99% | Gtot: 12,8%

CHAUME FIGUE



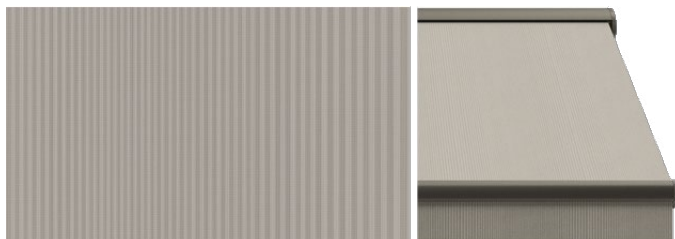
U235 | UV:100% | Gtot: 9%

CAFE



2316 | UV:99% | Gtot: 5%

ZINC



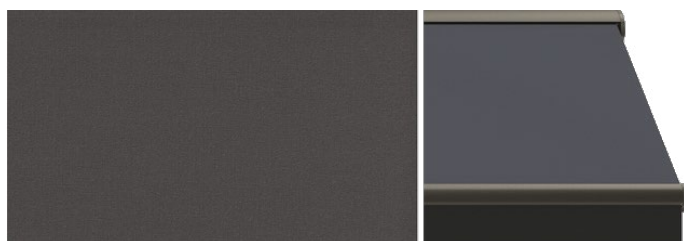
2802 | UV:99% | Gtot: 11%

SILVER MELANGE



0028 | UV:99% | Gtot: 7,36%

ANTRACITA



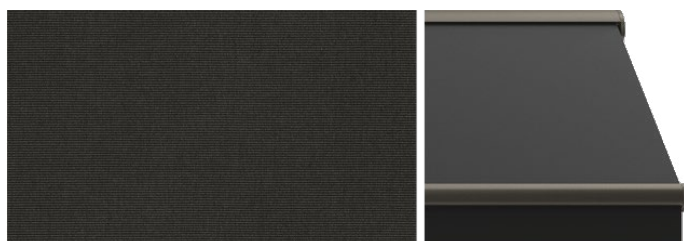
8488 | UV:99% | Gtot: 6%

GRAPHITE ZIP



1524 | UV:98% | Gtot: 12%

EBONY TWEED



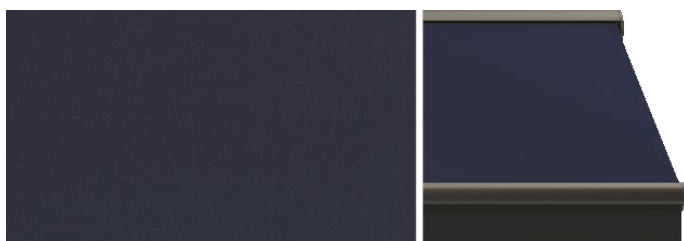
7324 | UV:98% | Gtot: 10%

CHARCOAL TWEED



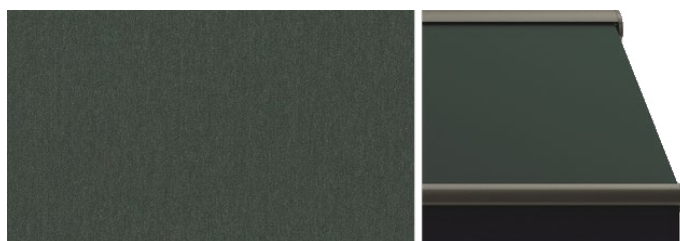
0402 | UV:99% | Gtot: 5%

MARINE



2145 | UV:99% | Gtot: 5%

SWITCH EMPIRE



U393 | UV:100% | Gtot: 8%

KONSTRUKTIONSFARBEN

# MARKISE



RAL 9016 Reinweiß



RAL 1015 Hellelfenbein



RAL 9006 Weißaluminium



RAL 8014 Sepiabraun



FSM 71319 Graphit

KONSTRUKTIONSFARBEN

# PERGOLA & REFLEKSOL & SLIDEPANEL



RAL 9016 Matt



RAL 7016 Matt



FSM 71319

**DIE KOMPLETTE FARB-  
& STOFFMUSTERPALETTE  
GERNE AUF ANFRAGE!**

GÜNTHER TORE GMBH  
Moos 11, 5431 Kuchl  
+43 6244 75 45  
office@guenther-tore-at

